

CDS Series

Single Phase Portable Submersible Construction Dewatering Pumps



FEATURES

- Single phase, dry type, submersible 2 pole induction motor.
- Class 'E' motor insulation.

Rugged construction

Large channel in the spiral casing allows sand and silt laden water to pass through easily with minimal wear and clogging.

Ease of maintenance

Pump can be dismantled/assembled using a single 13mm wrench.

Anti-wicking cable entry

Anti-wicking cable connectors prevent water from entering the motor through the cable wire.

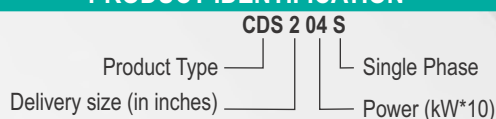
Durability

- Built-in shaft mounted agitators prevent air locks that sometimes occur with vortex impellers.
- Dual silicon carbide mechanical seals ensure durability.
- Semi vortex impellers made of urethane rubber ensure durability and performance.
- Oil lifters extend the life of the mechanical seals by providing efficient lubrication and cooling.
- Double shielded, permanently lubricated, high temperature, deep groove, ball bearings extend operational life.

PRODUCT DATA

- Power range : 0.5HP & 1HP, Single Phase, 220V, 50Hz
- Head range : Upto 16m
- Discharge range : Upto 18m³/hr
- Solid handling size : Max. 7mm
- Delivery size : 50mm and 80mm

PRODUCT IDENTIFICATION



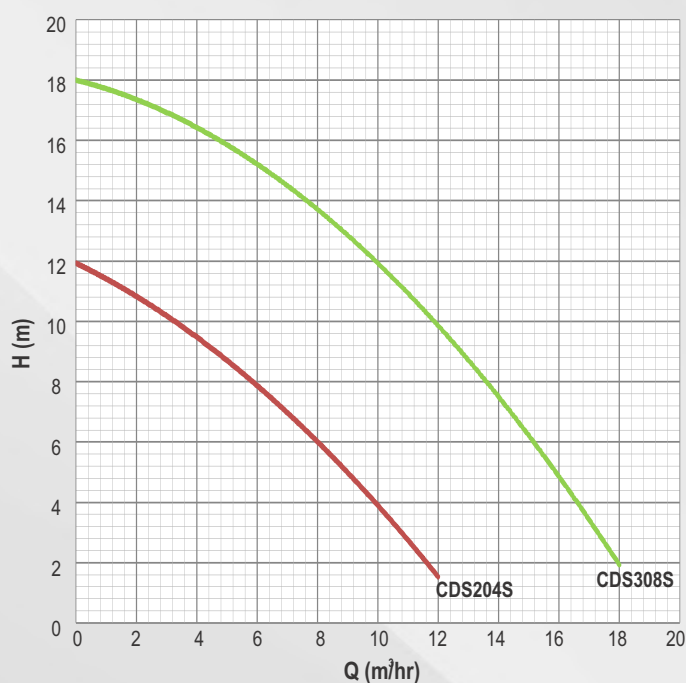
AQUATEX CDS pumps are light weight, portable and rugged dewatering pumps.

APPLICATIONS

- Removing sand and silt laden water from foundation and civil construction sites.
- Removing storm water from basements of buildings.



PERFORMANCE CURVE

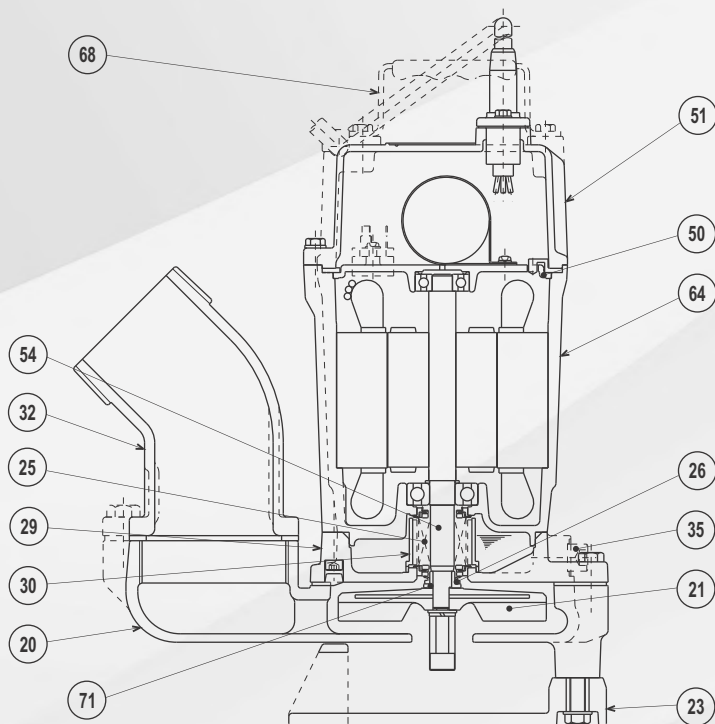


CDS Series

Single Phase Portable Submersible Construction Dewatering Pumps



MATERIALS OF CONSTRUCTION



Part No.	Component	Material
20	Pump Casing	CI
21	Impeller	Urethane Rubber
23	Suction Strainer	PVC
25	Mechanical Seal	Silicon Carbide
26	V-Ring	Nitrile Rubber
29	Oil Casing	CI
30	Oil Lifter	Resin
32	Hose Coupling	CI
35	Oil Plug	SS, AISI 304
50	Motor Bracket	Aluminium Alloy
51	Motor Head Cover	Aluminium Alloy
54	Shaft	SS, AISI 403
64	Motor Housing	Aluminium Alloy
68	Handle	Steel + Nitrile Rubber
71	Shaft Sleeve	SS, AISI 304

DIMENSIONS AND WEIGHT

Pump Type	Power		Dimensions (in mm)			Weight kg	Continuous running Water Level mm
	HP	kW	A	B	øD		
CDS204S	0.5	0.4	328	241	50	11.3	90
CDS308S	1.0	0.75	394	285	80	16.8	90

